



LETTUCE ICEBERG

Harvest Guide 2024 Hay - New South Wales



SOUTH PACIFIC SEEDS
SINCE 1986

VARIETY	JAN	FEB	MAR	APR	MAY	JUN	JUL	AUG	SEP	OCT	NOV	DEC
Snowball				S								
								H				
Turino			S									
						H						

S Direct Sow **H** Harvest

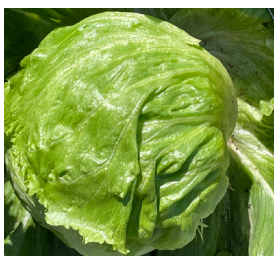
TRANSPLANTED CROPS: Reduce the time by 2-3 weeks depending on the time of year.

Travers Pickmere | 0407 000 036

The information provided is based on an average of data and observations collected from our trials. Significant variations may occur in the performance due to a range of conditions including cultural/management practices, climate, soil type and geographic location. As a consequence South Pacific Seeds cannot accept any liability as to the accuracy of this information. VALID FOR 12 MONTHS FROM JANUARY 2024. ACN 002 887 256

Griffith | 02 6962 7333
 Adelaide | 0417 545 099
 Brisbane | 07 3393 3766
 Melbourne | 03 9770 8441
 Perth | 08 9331 6356

www.southpacificseeds.com.au



SNOWBALL

SNOWBALL is a later maturing, uniform and vigorous Iceberg variety for cold season production. It has shown excellent tipburn and frost tolerance in our commercial trials to date, with medium to large frame and heads. SNOWBALL is a mid to dark green colour with medium blistered leaf, attractive, uniform round heads and an average weight of 680 grams. SNOWBALL has resistance to Downy Mildew (Bl).



TURINO

High Resistance: Bl:16,21,23,32

TURINO is a mid-maturing Iceberg with large dense heads and a large frame. It has excellent uniformity, displaying nice round, dark green heads and good tipburn tolerance. TURINO has a medium blistered leaf and is suited for winter production in Qld and early winter in WA, with some resistance to Downy Mildew (Bl).