



LETTUCE

Harvest Guide 2024 South Australia



SOUTH PACIFIC SEEDS
SINCE 1986

VARIETY	JAN	FEB	MAR	APR	MAY	JUN	JUL	AUG	SEP	OCT	NOV	DEC
Titus (Iceberg)			T/P									
					H							
Rondo (Iceberg)			T/P									
					H							
Turino (Iceberg)				T/P								
						H						
King (Iceberg)				T/P								
						H						
Snowball (Iceberg)					T/P							
							H					
Norman (Cos)			T/P									
					H							
Sprite (Cosberg)				T/P								
						H						

T/P Transplant H Harvest

Matthew Sheedy | 0417 545 099

The information provided is based on an average of data and observations collected from our trials. Significant variations may occur in the performance due to a range of conditions including cultural/management practices, climate, soil type and geographic location. As a consequence South Pacific Seeds cannot accept any liability as to the accuracy of this information. VALID FOR 12 MONTHS FROM FEBRUARY 2024. ACN 002 887 256

Griffith | 02 6962 7333
 Brisbane | 07 3393 3766
 Melbourne | 03 9770 8441
 Perth | 08 9331 6356

www.southpacificseeds.com.au



TITUS
(Iceberg)

TITUS is a mid maturing, cool shoulder variety with good uniformity, and has shown good bolting tolerance in plantings to date. TITUS has a medium frame, medium-sized round heads and a short core.



RONDO
(Iceberg)

Intermediate Resistance: Fol:1

RONDO is a mid maturing, warm shoulder variety with good tipburn tolerance, good uniformity and a nice dark green colour. RONDO has a medium frame and medium round heads with a short core. It has resistance to Fusarium Wilt (Fol).



TURINO
(Iceberg)

High Resistance: Bl:16,21,23,32

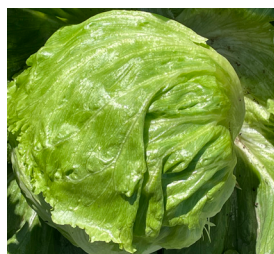
TURINO is a mid-maturing Iceberg with large dense heads and a large frame. It has excellent uniformity, displaying nice round, dark green heads and good tipburn tolerance. TURINO has a medium blistered leaf and is suited for winter production in Qld and early winter in WA, with some resistance to Downy Mildew (Bl).



KING
(Iceberg)

High Resistance: Bl:16-24,27-28,30-32

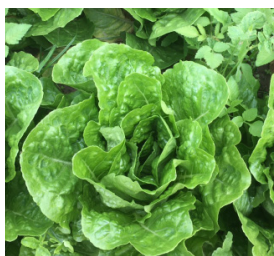
KING is an early to mid-maturing variety with a medium-sized, round head and frame. It has a smooth leaf of mid green colour and also presents with a short core. KING suits autumn harvest in Vic and winter harvest in Qld for growers wanting a medium sized head. KING has shown good uniformity with tipburn and bolting tolerance in plantings to date and has some Downy Mildew (Bl) resistance.



SNOWBALL
(Iceberg)

High Resistance: Bl:16-37

SNOWBALL is a later maturing, uniform and vigorous Iceberg variety for cold season production. It has shown excellent tipburn and frost tolerance in our commercial trials to date, with medium to large frame and heads. SNOWBALL is a mid to dark green colour with medium blistered leaf, attractive, uniform round heads and an average weight of 680 grams. SNOWBALL has resistance to Downy Mildew (Bl).



NORMAN
(Cos)

High Resistance: Bl:16-24,27,28,30-32

NORMAN is a large, dark green Cos with a glossy and blistered leaf of medium crisp texture. NORMAN has shown good uniformity, recommended for harvesting in autumn/winter. Resistance to Downy Mildew (Bl).



SPRITE
(Cosberg)

High Resistance: Bl:16,21,23,32

SPRITE is a mini Cosberg variety with thick, dark green leaves, a dense heart and low core. It has a medium head size with good leaf numbers, and very good internal and external tipburn tolerance in plantings to date. SPRITE is a uniform variety with canoe-shaped leaves, which are crisp and smooth in texture. It has very good resistance to Downy Mildew (Bl).