



# LETTUCE COS

## Harvest Guide 2024 Southern Victoria



**SOUTH PACIFIC SEEDS**  
SINCE 1986

VARIETY	JAN	FEB	MAR	APR	MAY	JUN	JUL	AUG	SEP	OCT	NOV	DEC
Norman	T/P											
							H					
Becos							T/P					
	H						H					
Pixie	T/P											
							H					
Florence									T/P			
		H									H	
040-22 Mini Green (trial)												
						T/P						
							H					

T/P Transplant    H Harvest

Jack Menzel | 0429 870 555

Nicholas Kocyan | 0419 017 139

The information provided is based on an average of data and observations collected from our trials. Significant variations may occur in the performance due to a range of conditions including cultural/management practices, climate, soil type and geographic location. As a consequence South Pacific Seeds cannot accept any liability as to the accuracy of this information. VALID FOR 12 MONTHS FROM DECEMBER 2023. ACN 002 887 256

Griffith | 02 6962 7333  
Brisbane | 07 3393 3766  
Melbourne | 03 9770 8441  
Perth | 08 9331 6356

[www.southpacificseeds.com.au](http://www.southpacificseeds.com.au)



**NORMAN**

**High Resistance:** Bl:16-24,27,28,30-32

NORMAN is a large, dark green Cos with a glossy and blistered leaf of medium- crisp texture. NORMAN has shown good uniformity, recommended for harvesting in autumn/ winter. Resistance to Downy Mildew (Bl).



**BECOS**

**High Resistance:** Bl:16-36

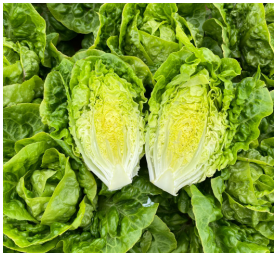
BECOS is a 3/4 size, dark green Cos variety which performs very well in autumn, mild winter and spring. It produces heads of average 29cm tall, with good hearts and a crisp, glossy, heavily blistered leaf. BECOS has yellow internal leaf with excellent uniformity and tolerance to internal and external tipburn in commercial plantings to date. It has resistance to Downy Mildew (Bl).



**PIXIE**

**High Resistance:** Bl:16-19,21-25,28-30,32

PIXIE is a very dark red-purple mini Cos which has an upright growth habit, u-shaped butt and very good uniformity. It has shown very good tipburn tolerance in plantings to date, both internally and externally. PIXIE's leaf is glossy with a medium blister and bright green internal. It is a slow growing variety for year-round production and has resistance to Downy Mildew (Bl).



**FLORENCE**

**High Resistance:** Bl: 16-29,32-34

FLORENCE is a light green Gem variety for yearround production, with excellent uniformity and a medium blistered leaf. FLORENCE has shown excellent tipburn and bolting tolerance in plantings to date with a short core and good head weight/ density. It has a light green-yellow internal whilst the outer leaf offers good gloss and crispness. FLORENCE is approx. 14cm in height and is an ideal variety for multi-packs with minimal trim required. It has resistance to Downy Mildew (Bl).



**040-22  
Mini Green  
(Trial)**

Still under assessment.